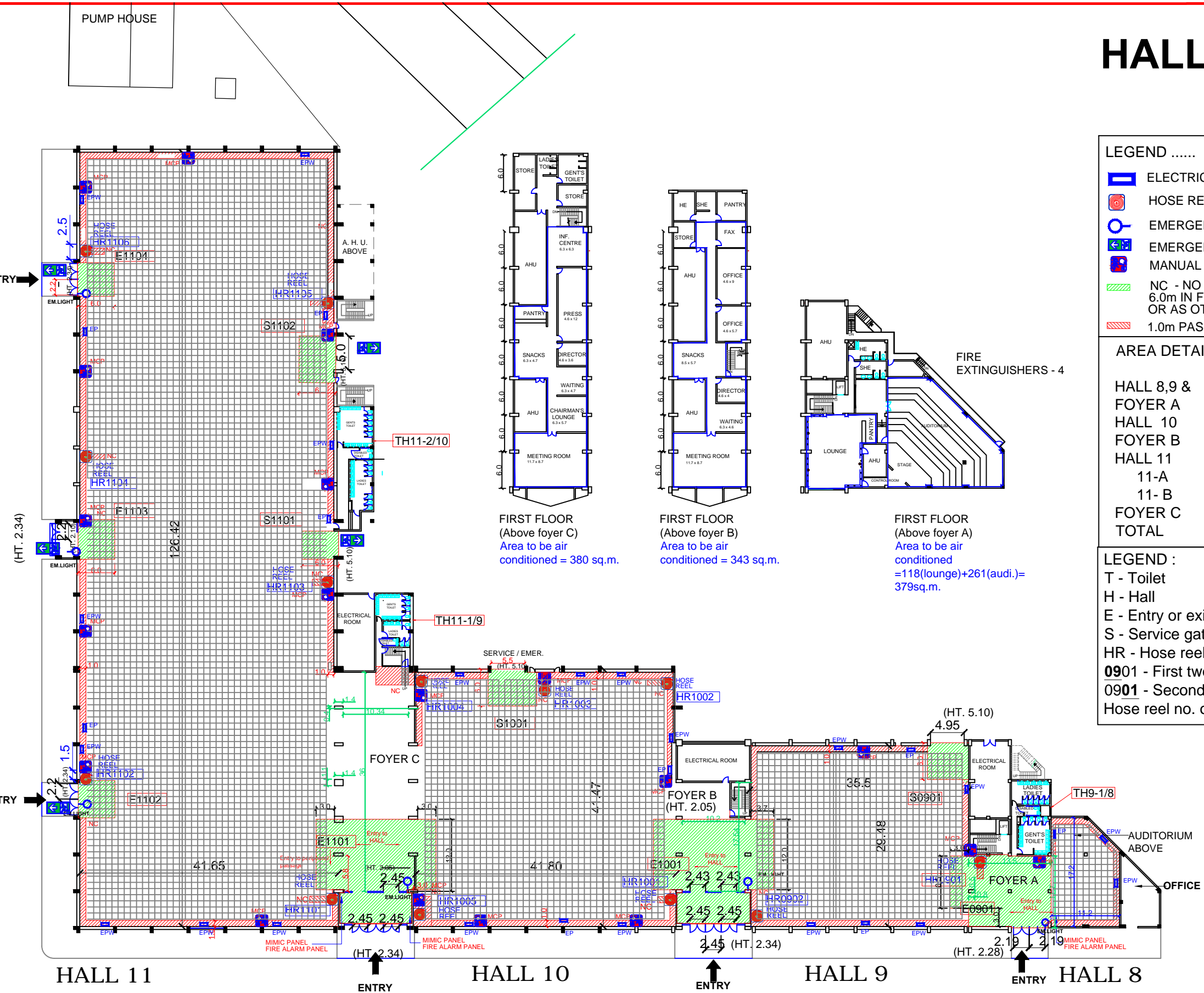
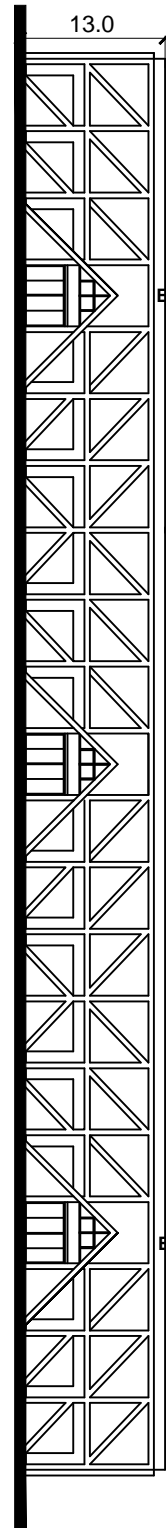


HALL - 8, 9, 10 & 11

SIDE ELEVATION



LEGEND

- ELECTRICAL PANEL(1.0m passage)
- HOSE REEL(1x3 m passage)
- EMERGENCY LIGHT
- EMERGENCY EXIT(blockage free)
- MANUAL CALL POINT(1.0 m passage)
- NC - NO CONSTRUCTION ZONE 6.0m IN FRONT OF ALL ENTRY/ EXIT OR AS OTHERWISE INDICATED.
- 1.0m PASSAGE TO BE LEFT ALL AROUND

AREA DETAIL (carpet area)

HALL 8,9 & FOYER A	= 1393.26 SQ.M.
HALL 10	= 1754.49 SQ.M.
FOYER B	= 231.00 SQ.M.
HALL 11	= 5266.71 SQ.M.
11- A	= 2995.71 SQ.M.)
11- B	= 2271.00 SQ.M.)
FOYER C	= 463.78 SQ.M.
TOTAL	= 9109.24 SQ.M.

LEGEND :

- T - Toilet
- H - Hall
- E - Entry or exit gates
- S - Service gates
- HR - Hose reel
- 0901** - First two digits indicates Hall no.
- 0901** - Second two digits indicates Toilet no. or Hose reel no. or entry gate no. or service gate no.

